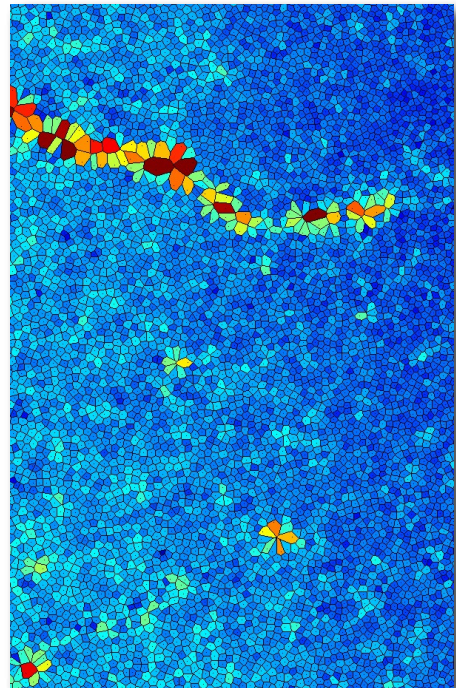
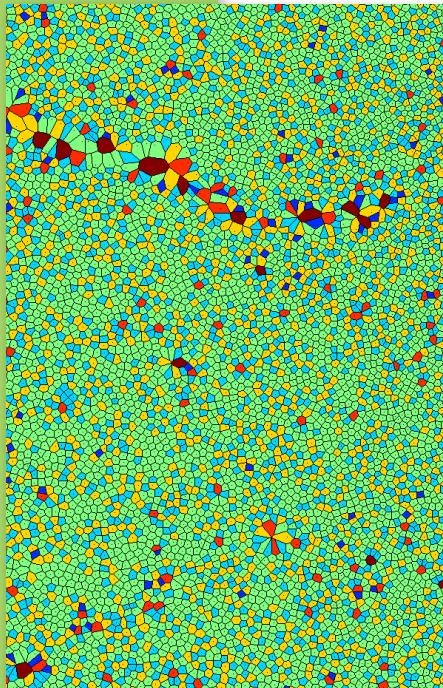
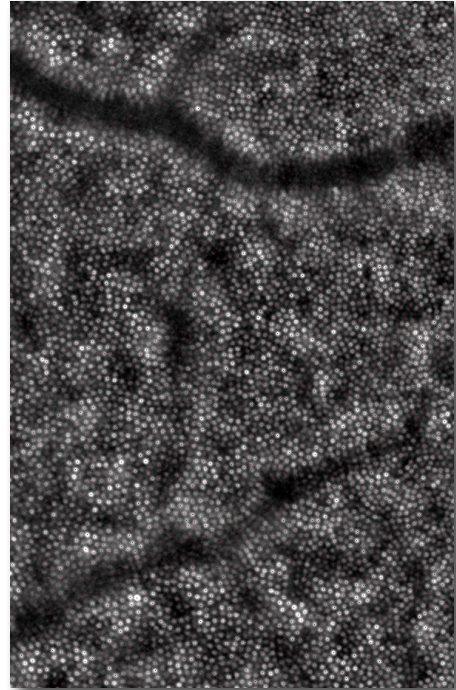
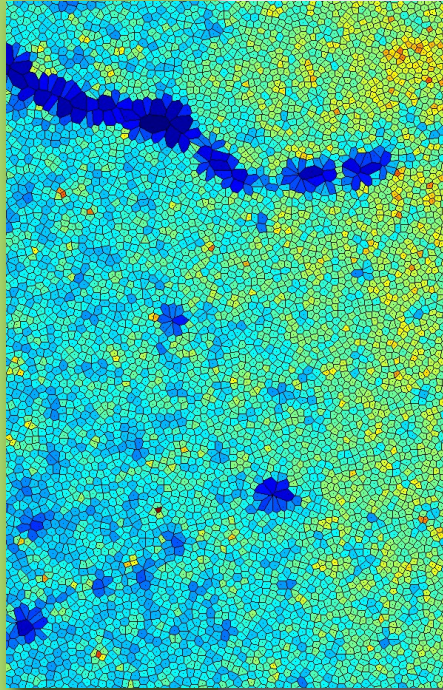


AOdetectTM mosaic

Software for the rtx1TM
Adaptive Optics
Retinal Camera¹

Cone photoreceptor mosaic analysis



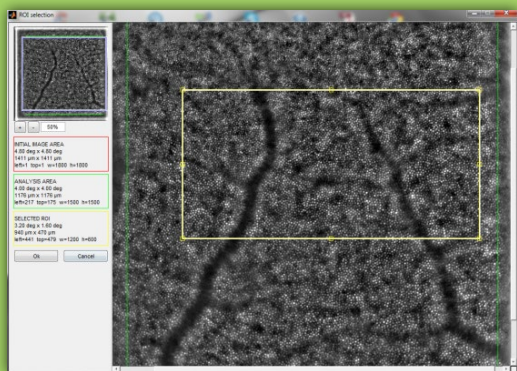
¹ The rtx1 is CE-marked, ARTG and Shonin approved. The rtx1 has not received FDA clearance. The AO detect has not been approved for clinical use.

AOdetectTM mosaic

Software for the rtx1TM
Adaptive Optics
Retinal Camera¹

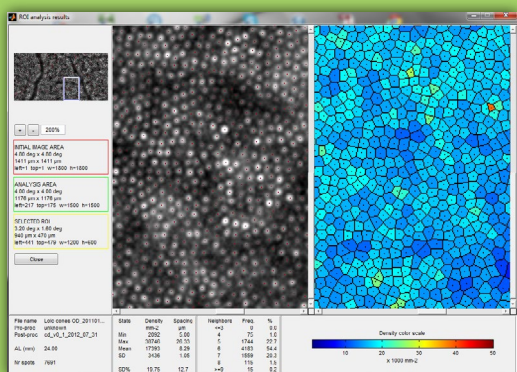
Cone photoreceptor mosaic analysis

4-step analysis



1. Region-of-interest selection
2. Extra-foveolar cone detection
3. Computation of cone mosaic descriptors:
statistics & color-coded, voronoi diagrams
4. Export in various formats (excel, graphics, text).

Mosaic descriptors



Cell density

Inter-cell spacing

Pleomorphism (number of closest neighbors)

Stats	Density	Spacing	Neighbors	Freq.	%
	mm ⁻²	μm	<=3	0	0.0
Min	2092	5.00	4	75	1.0
Max	38746	26.33	5	1744	22.7
Mean	17393	8.29	6	4183	54.4
SD	3436	1.05	7	1559	20.3
			8	115	1.5
SD%	19.75	12.7	>=9	15	0.2

¹The rtx1 is CE-marked, ARTG and Shonin approved. The rtx1 has not received FDA clearance. The AO detect software has not been approved for clinical use.

©2014 Imagine Eyes SA. All rights reserved. M DCP 018a. 18 rue Charles de Gaulle, Orsay, France, 91400 +33 (0)1 64 86 15 66